



**512 Waterside Park, North Woolwich Road, The Royal Docks, E16**  
**Asking price £495,000**

**Two double beds, two baths, terrace balcony**

For more information on this property call  
Lexi China Desk on **+44 (0)20 7355 0286**  
Email: [china@winkworth.com](mailto:china@winkworth.com)

[winkworth.co.uk](http://winkworth.co.uk)

**Winkworth**

See things differently



## DESCRIPTION

A stylish 2 bed first floor flat with living/dining, fitted kitchen, bathroom, en suite, amazing terrace around the whole living and bedrooms. approx 745 sq ft/ 69.3 sq m of living space. Finally, with a two year fixtures and fittings warranty, in addition to the 10 year NHBC warranty, you have peace of mind.

Estimated completion date: June 2014

With 1 parking space

Leasehold: 125 years

Estimated gross rental yield: 3.8 %

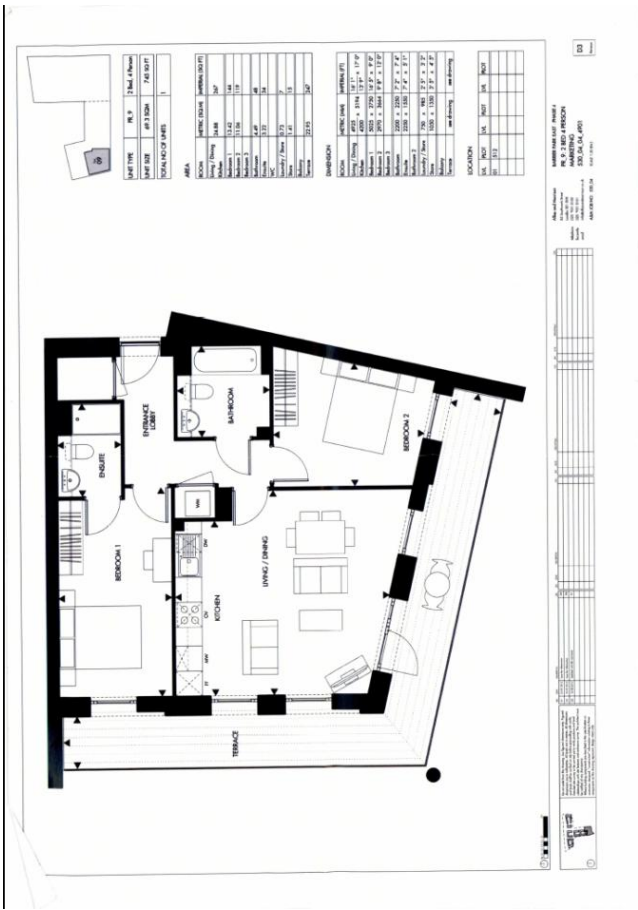
---

## ACCOMMODATION SUMMARY

---







*This floorplan is for illustration purposes only and is not to scale. The position and size of doors, windows, appliances and other features are approximate.*

For more information on this property call  
 Lexi China Desk on **+44 (0)207 355 0286**  
 Email: [china@winkworth.com](mailto:china@winkworth.com)



[winkworth.co.uk](http://winkworth.co.uk)

See things differently

Under the Property Misdescriptions Act 1991, these Particulars are a guide and act as information only. All details are given in good faith and are believed to be correct at time of printing. Winkworth give no representation as to their accuracy and potential purchasers or tenants must satisfy themselves by inspection or otherwise as to their correctness. No employee of Winkworth has authority to make or give any representation or warranty in relation to this property.